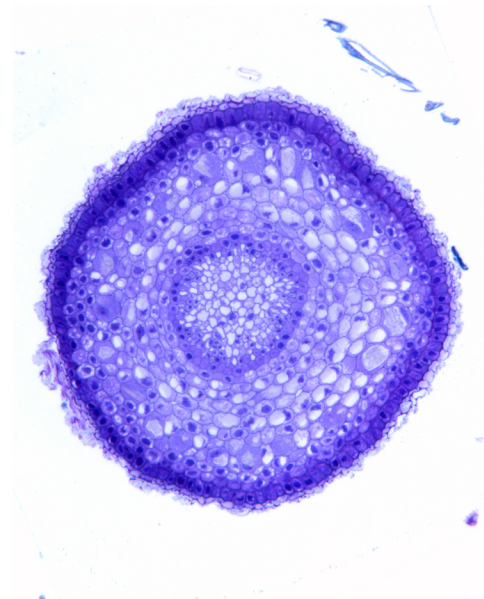
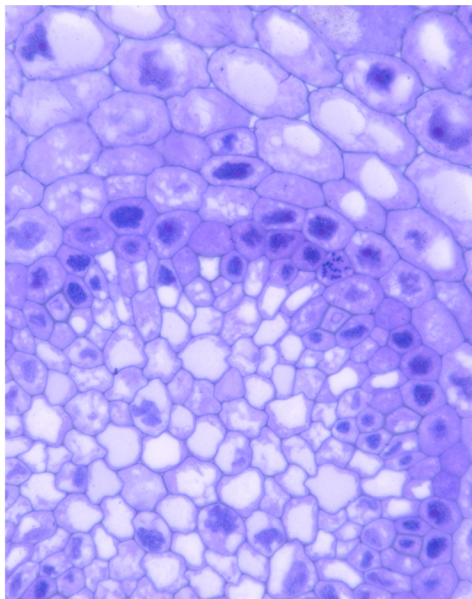
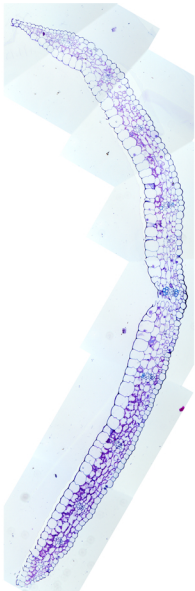


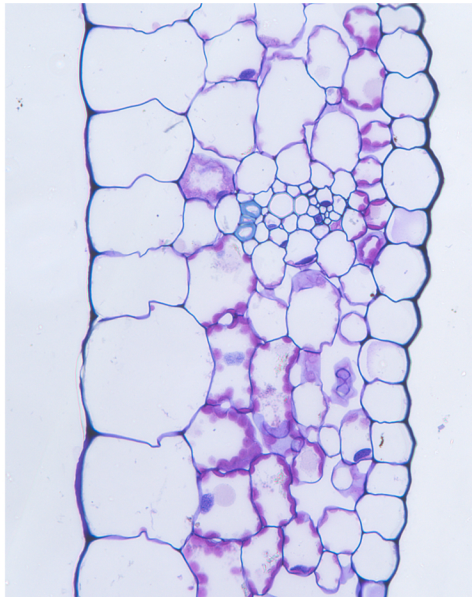
Chlorophytum-apex racinaire_cylindre central-...Chlorophytum-apex racinaire_cylindre central.tif



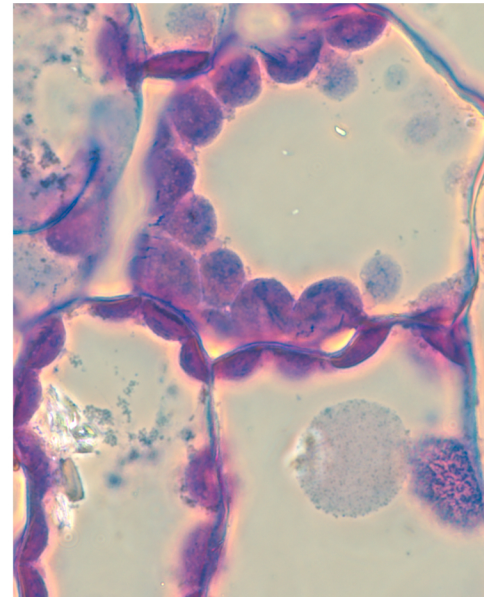
Chlorophytum-apex racinaire.tif



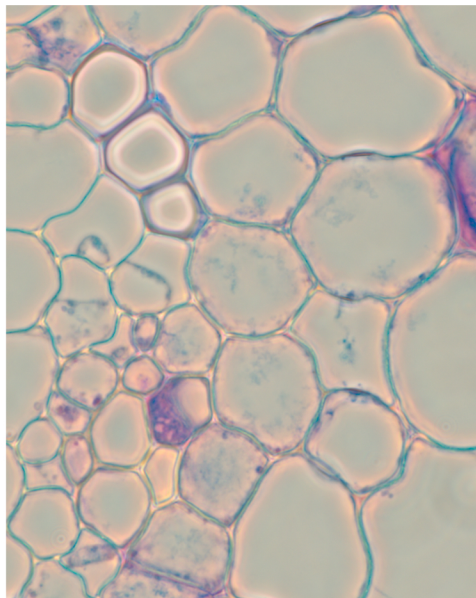
Chlorophytum-feuille_cellule mésophylle.tif



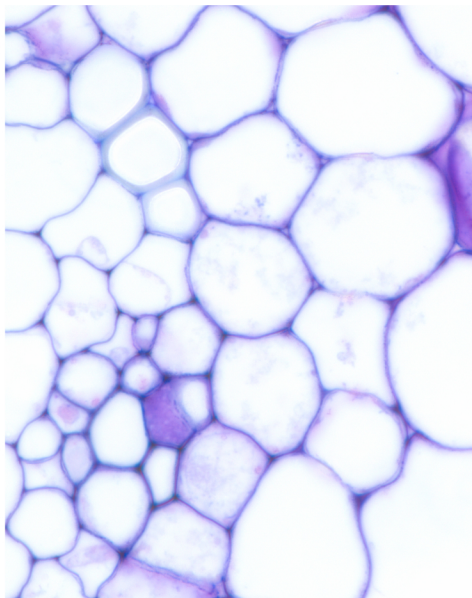
Chlorophytum-feuille_limbe.tif



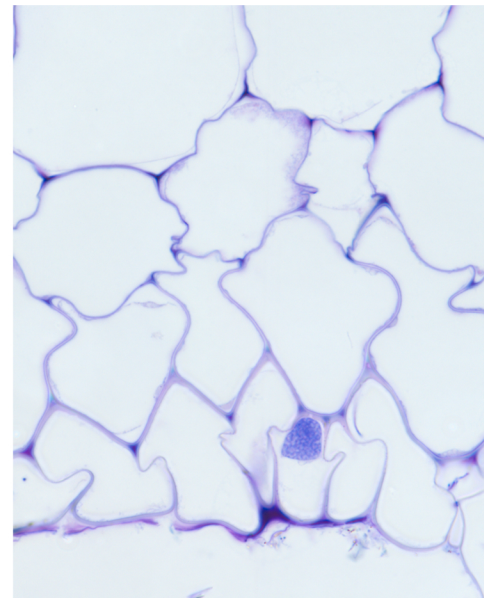
Chlorophytum-feuille.tif



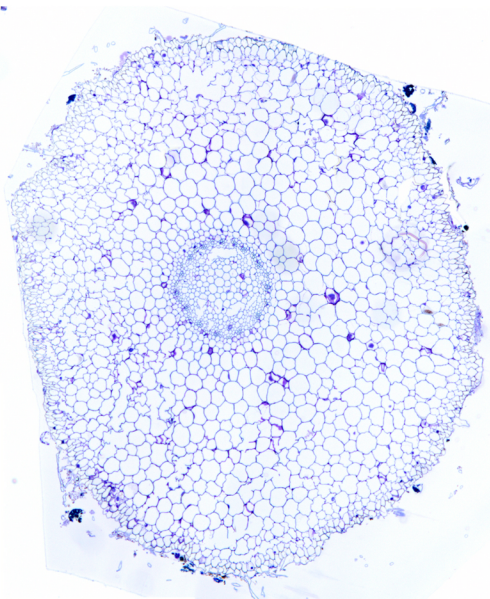
Chlorophytum-racine conductrice_endoderme.tif



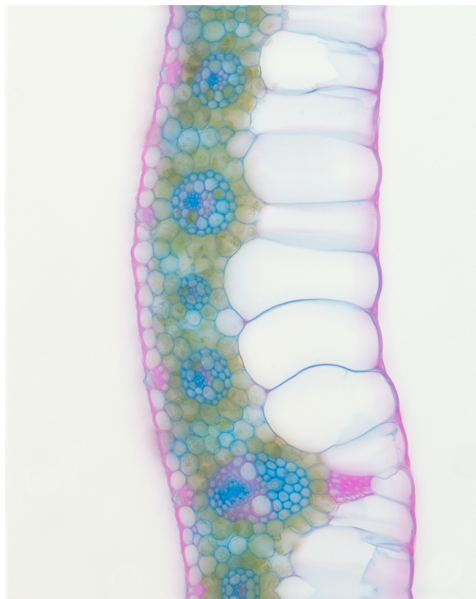
Chlorophytum-racine conductrice_phloème.tif



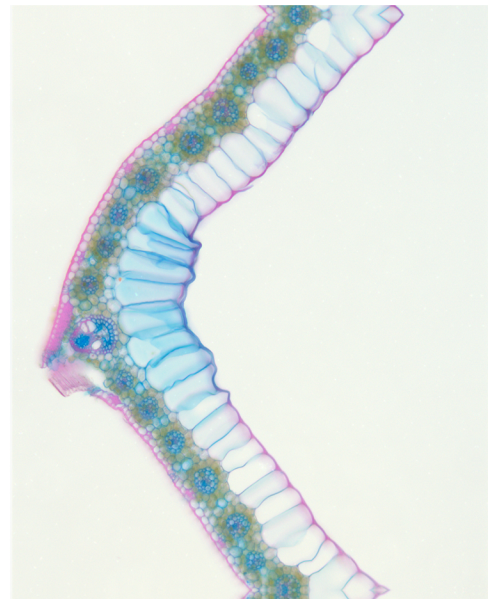
Chlorophytum-racine conductrice_tissus péri...



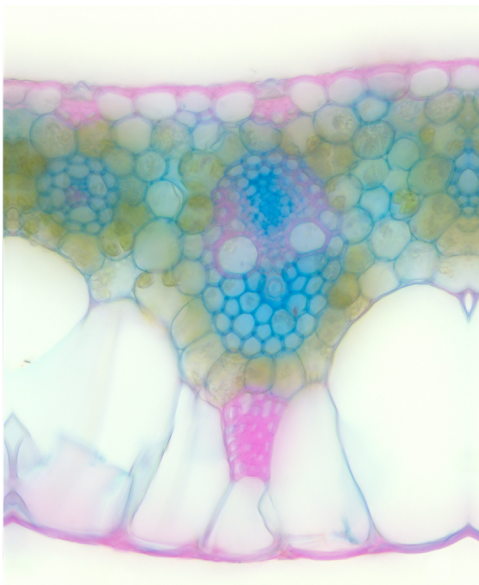
Chlorophytum-racine conductrice.tif



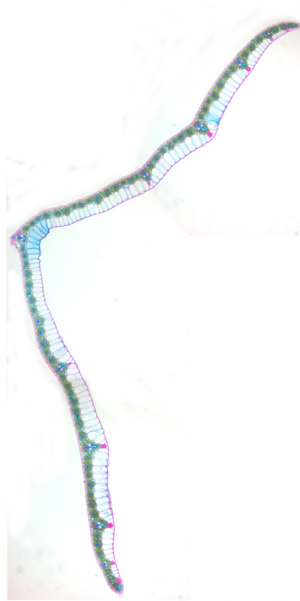
Cyperus-feuille_limbe.tif



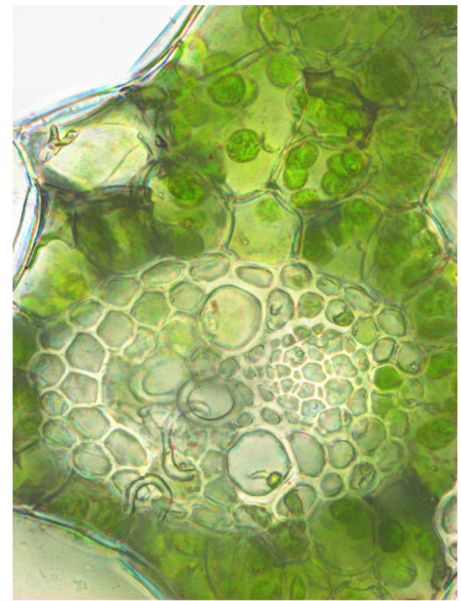
Cyperus-feuille_nervure médiane.tif



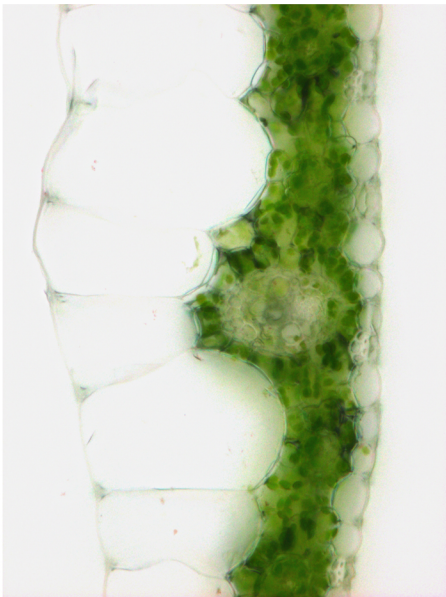
Cyperus-feuille-nervure latérale.tif



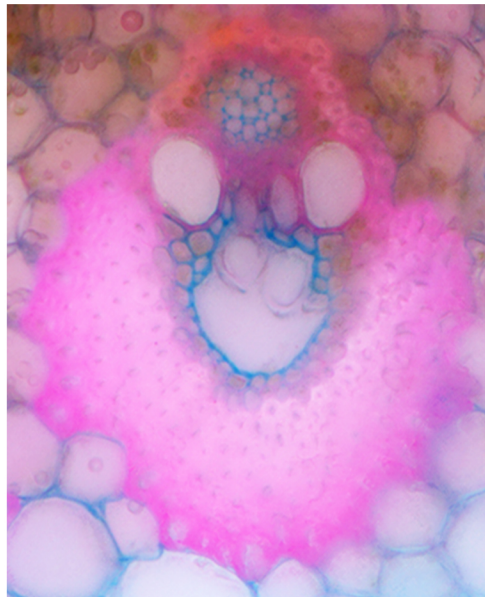
Cyperus-feuille.tif



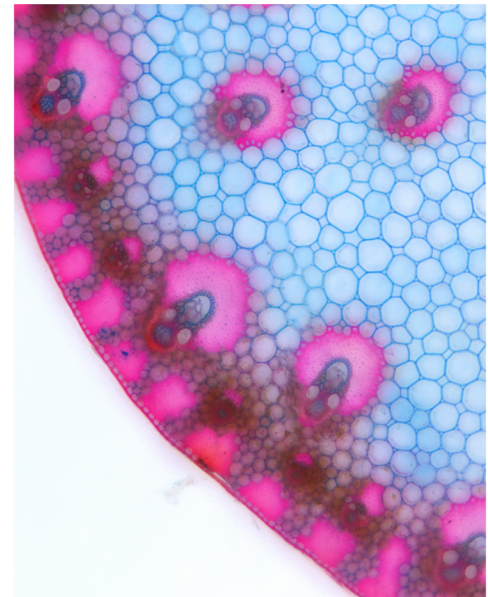
Cyperus-nervure latérale-non coloré, détail.tif



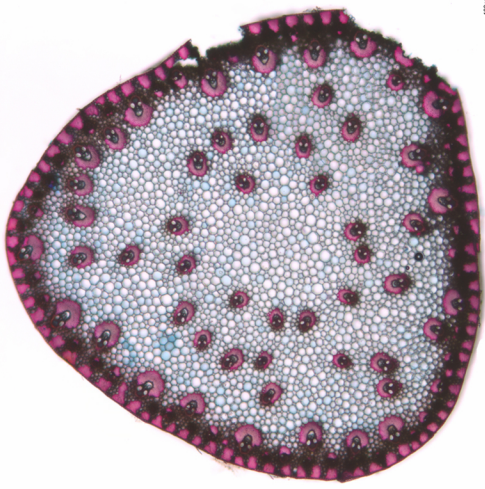
Cyperus-nervure latérale-non coloré.tif



Cyperus-tige-nervure.tif



Cyperus-tige-tissus périphériques.tif



Cyperus-tige.tif



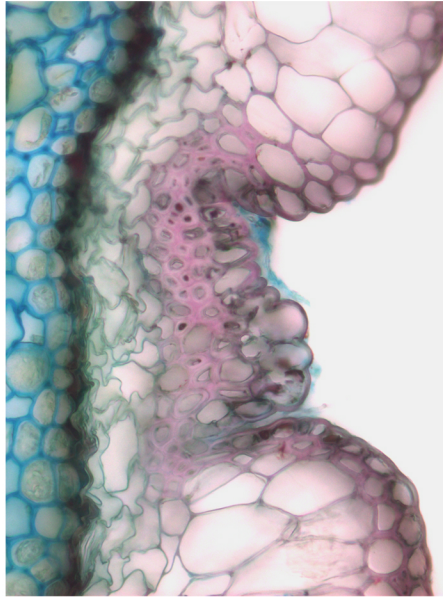
Picea-aiguille_canal sécréteur.jpg



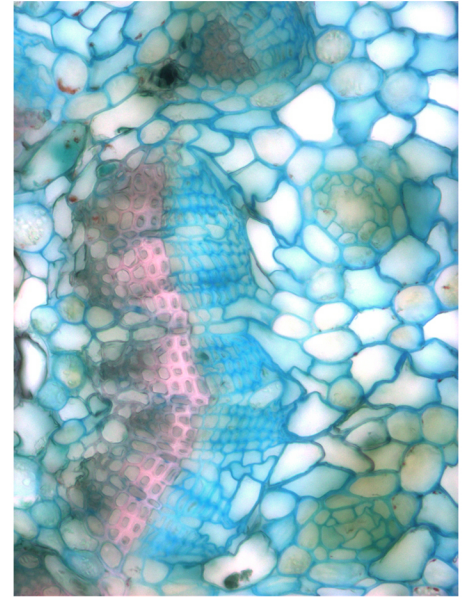
Picea-aiguille_faisceau vasculaire.jpg



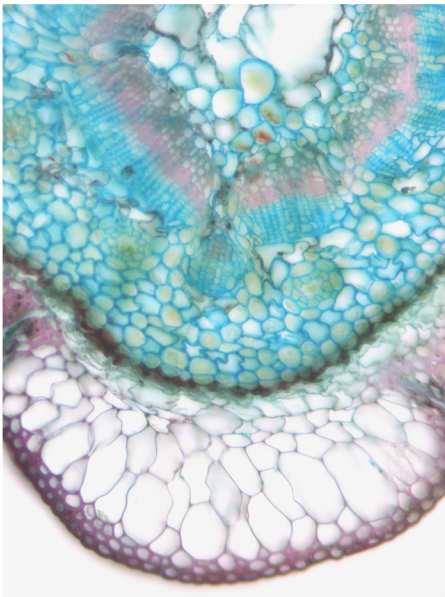
Picea-aiguille.jpg



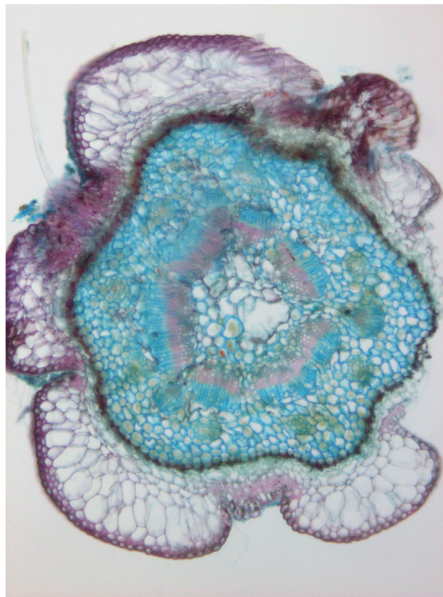
Picea-tige_cortex&épiderme.tif



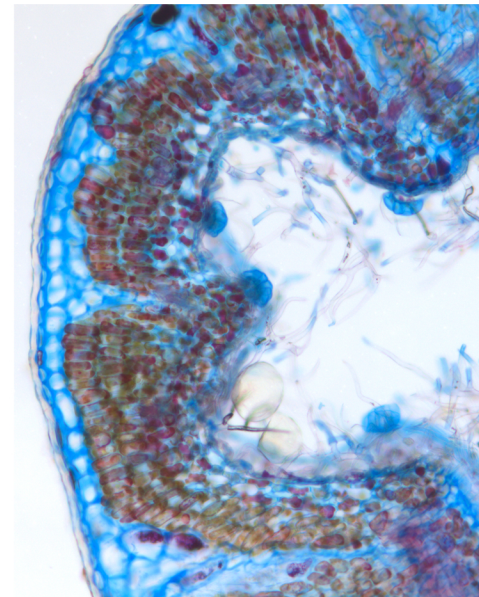
Picea-tige_cylindre central.tif



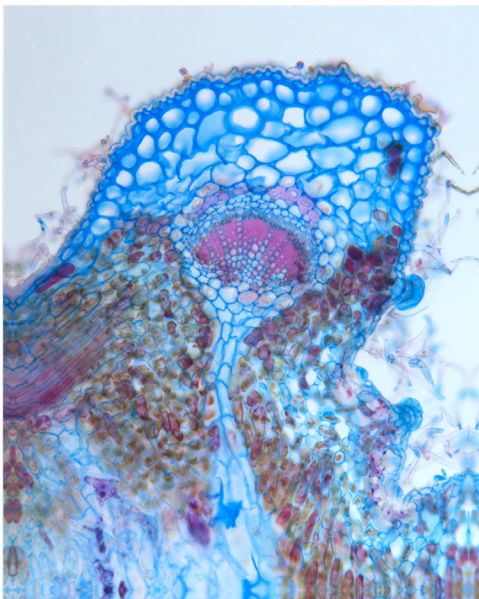
Picea-tige_det.tif



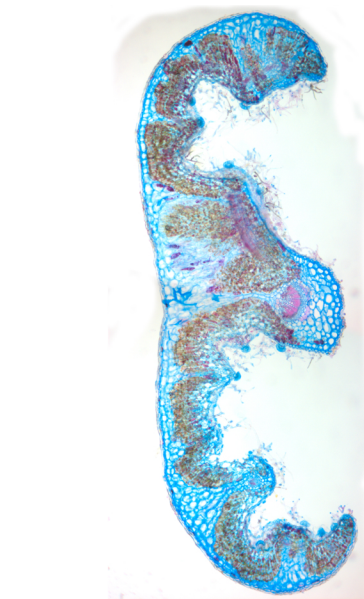
Picea-tige.tif



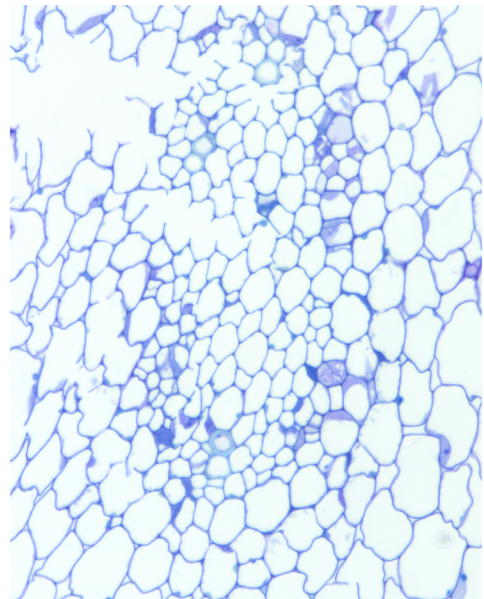
Rosmarinus-feuille_limbe.tif



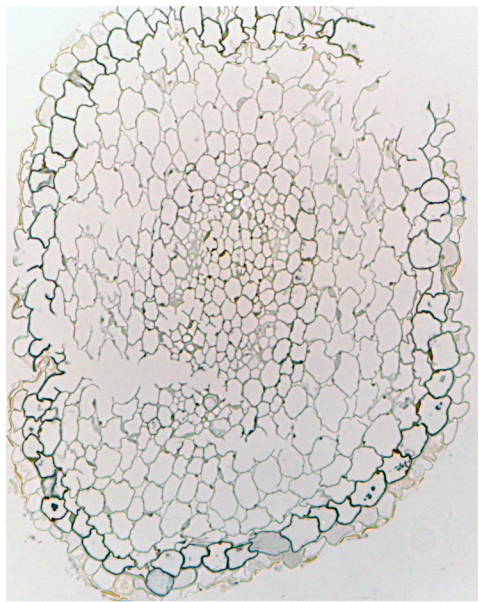
Rosmarinus-feuille_nervure.tif



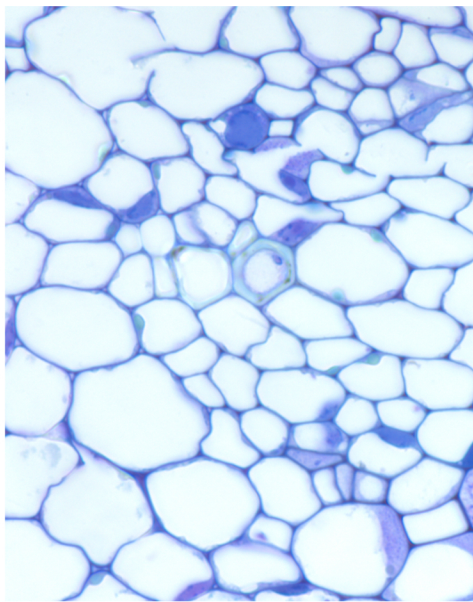
Rosmarinus-feuille.tif



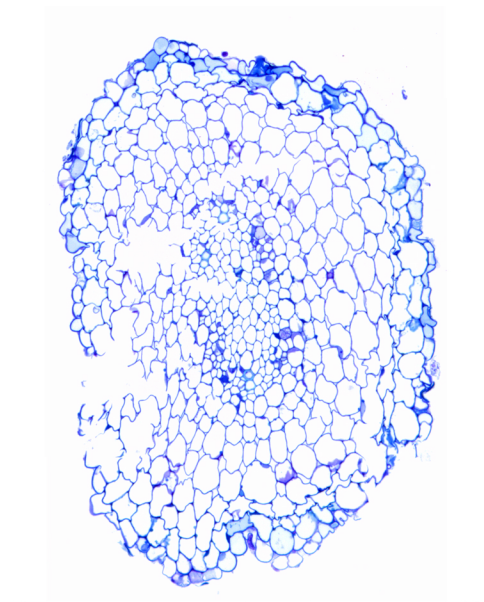
Rosmarinus-racine absorbante_cylindre



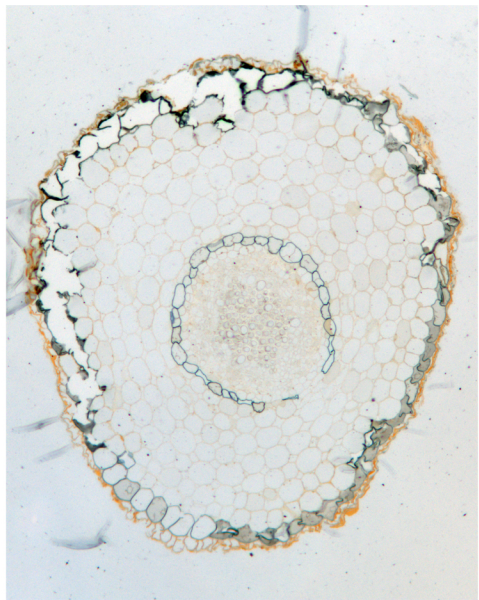
Rosmarinus-racine absorbante_révélation des...



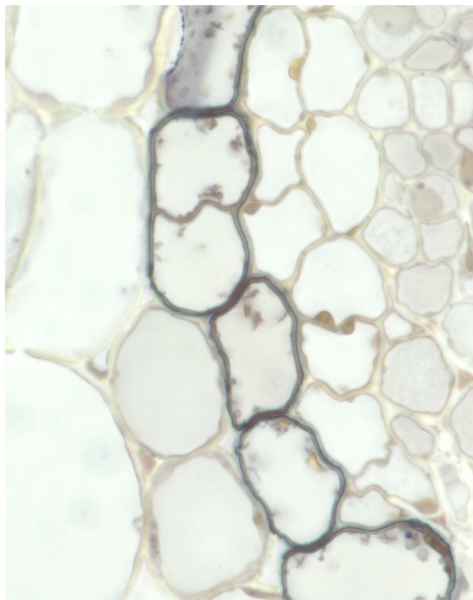
Rosmarinus-racine absorbante_tissus conduc...



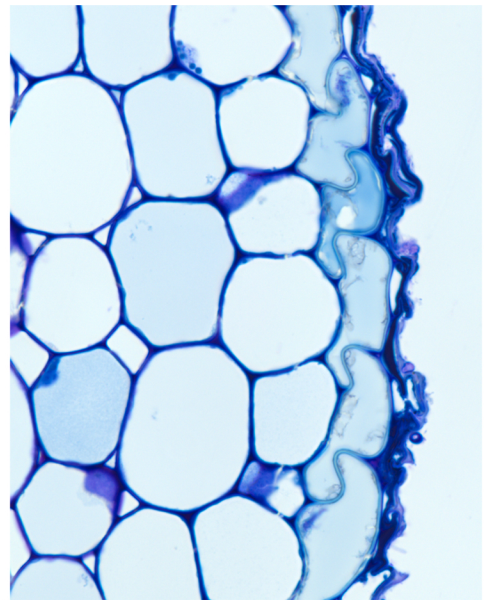
Rosmarinus-racine absorbante.tif



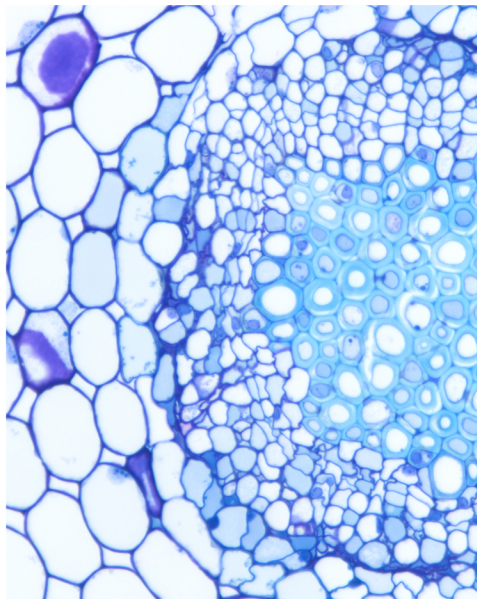
Rosmarinus-racine conductrice_révélation de...



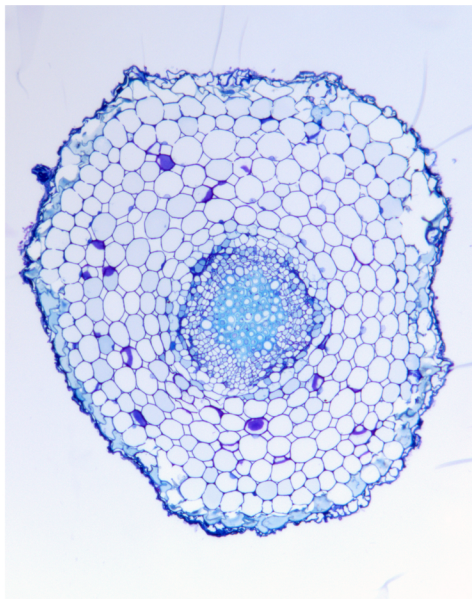
Rosmarinus-racine conductrice_subérisation ...



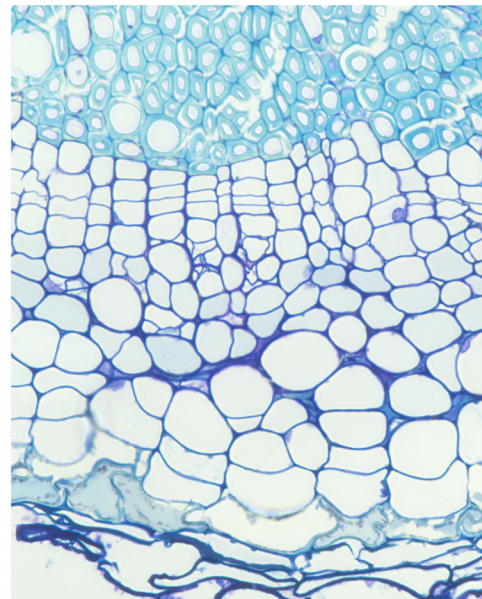
Rosmarinus-racine conductrice_tissus périphé...



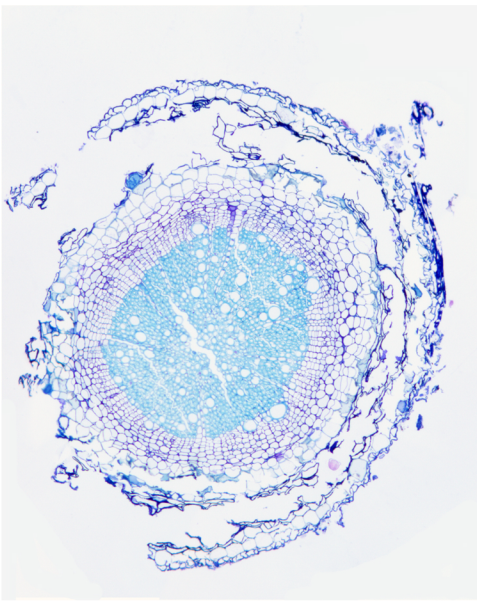
Rosmarinus-racine conductrice_tissus vascula...



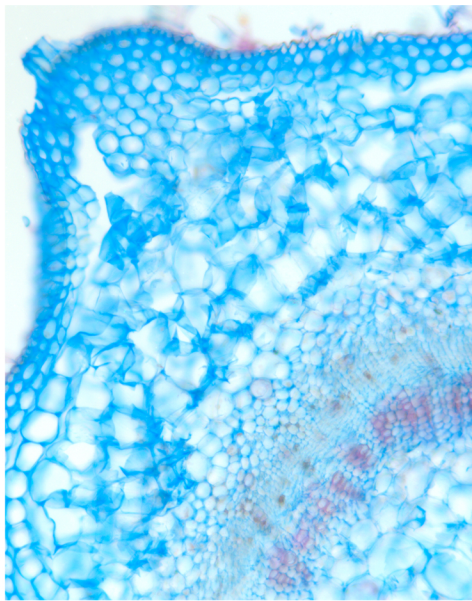
Rosmarinus-racine conductrice.tif



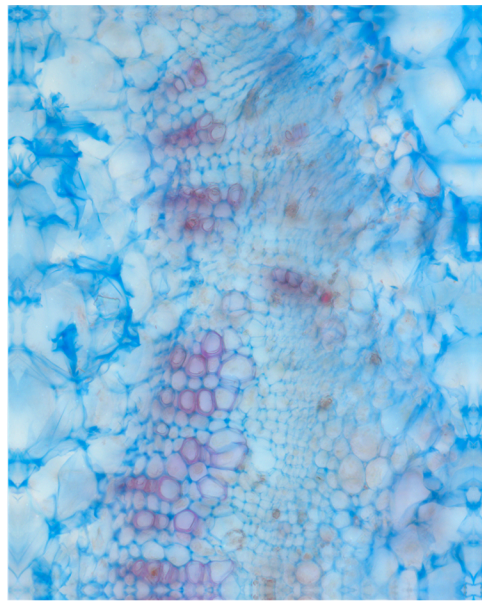
Rosmarinus-racine lignifiée_tissus vasculaires...



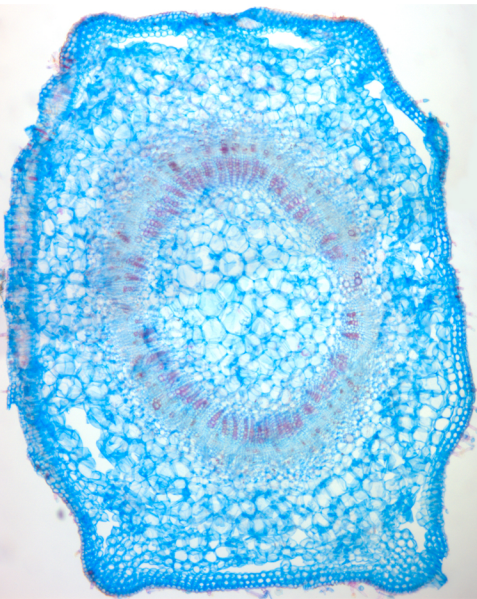
Rosmarinus-racine lignifiée.tif



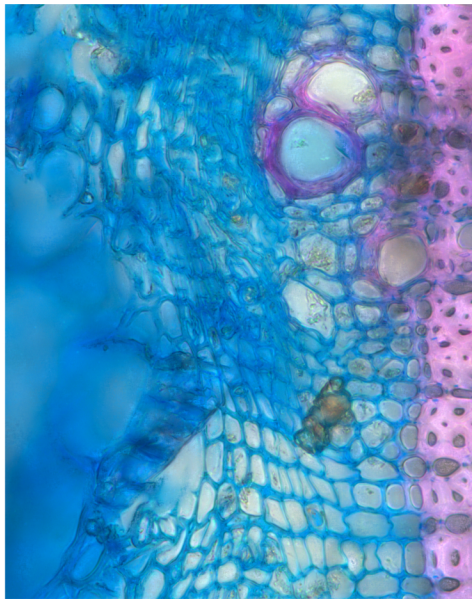
Rosmarinus-tige herbacée_tissus périphériqu...



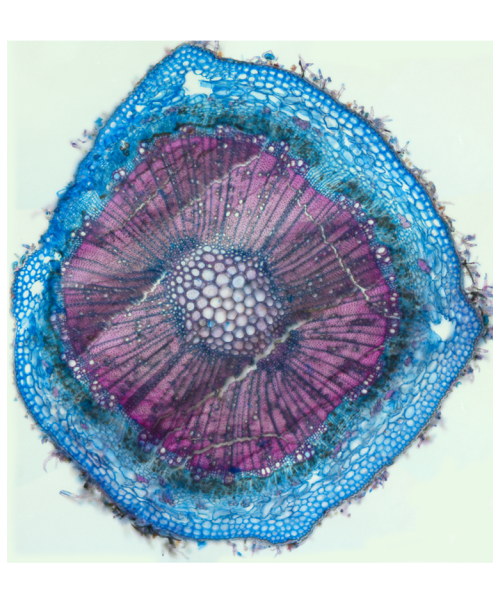
Rosmarinus-tige herbacée_tissus vasculaires.tif



Rosmarinus-tige herbacée.tif



Rosmarinus-tige lignifiée_cambium en activité.tif



Rosmarinus-tige lignifiée.tif